

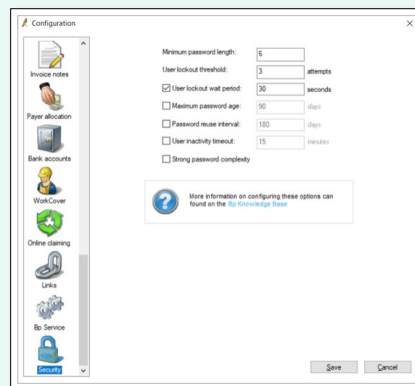
Password Security



Security Configuration

Using Security Configuration in Saffron

Password security and user account access has undergone significant changes in Saffron release to conform with the Australian Digital Health Agency Standards.



Security tab

Setup > Configuration that controls password security options.

Password Requirements

Minimum password length:	<input type="text" value="6"/>
User lockout threshold:	<input type="text" value="3"/> attempts
<input checked="" type="checkbox"/> User lockout wait period:	<input type="text" value="30"/> seconds
<input type="checkbox"/> Maximum password age:	<input type="text" value="90"/> days
<input type="checkbox"/> Password reuse interval:	<input type="text" value="180"/> days
<input type="checkbox"/> User inactivity timeout:	<input type="text" value="15"/> minutes
<input type="checkbox"/> Strong password complexity	

Minimum Length

- Minimum length set at 6 characters

Maximum Length

- Maximum password length increased to 20 characters

Passwords Complexity

- Users Setting to enforce password complexity
- If the '**Strong**' password complexity configuration option is enabled, **case sensitivity** is enforced when logging in

Security Settings

Password Expiry

- Set maximum password age (e.g., new password prompt will display after 90 days)

Password Reuse

- Set password reuse time limit (e.g., same password can't be used within 90 days)

Prompt to Change Password

- Users whose passwords do not meet the new settings will be prompted to change their password

Knowledge Base Resources

- Use the link within the Configuration window to directly access **Bp Knowledge Base**



Failed Login Attempts Lockout

- Set amount of login attempts before user is locked out
- Set lockout timeout period from failed login attempts (e.g., 30 second lockout before user can try to login again)

Inactive Timeout / Account Lock

- Option to set inactivity timeout
- If user walks away from computer, user will be logged out after 15 minutes. User required to enter password to login again

Security Audit

- A new button **Permission changes** has been added to the Security Audit function to show historical permission changes